



# Penner Manufacturing Inc.

## Aqua-Aire® Spas

Plumbing Specifications

Electrical Specifications

Room Recommendations

Plumbing Codes

*THE SUPERIOR™ SERIES*

### **Contact Information:**

**Mail: PO Box 523**

**102 Grant Street**

**Aurora NE 68818**

**Phone: 1-800-732-0717**

**1-866-736-6377**

**Fax: 1-402-694-5319**

**Email: [sales@pennercareinc.co](mailto:sales@pennercareinc.co)**



# Penner Manufacturing Inc.

## Aqua-Aire® Spas

### Regulatory Requirements

- Penner Manufacturing meets or exceeds requirements of most State and Municipal Plumbing and Electrical Codes. Always seek the recommendations of applicable agencies prior to installation of a bathing system. It is advisable to ask if RPZ's or Reduced Pressure Zone Backflow Prevention Valves are required
- Penner Spas Compliant to the following Regulations:
  - (UL) Under Writers Laboratories Inc PIDF.E213698  
Medical Equipment
  - (FDA) Food and Drug Administration Medical Device  
Establishment 1922538



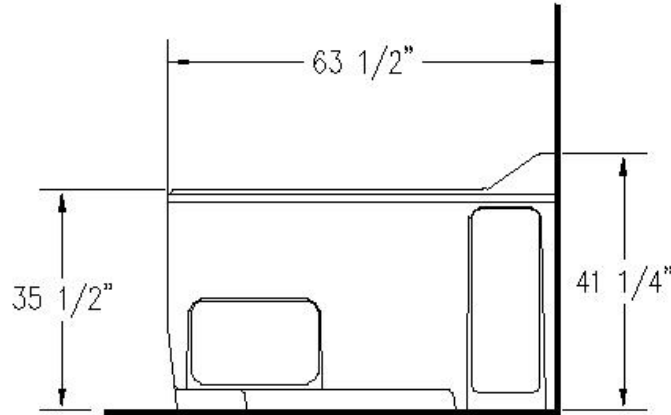
# Penner Manufacturing Inc.

## Aqua-Aire® Spas

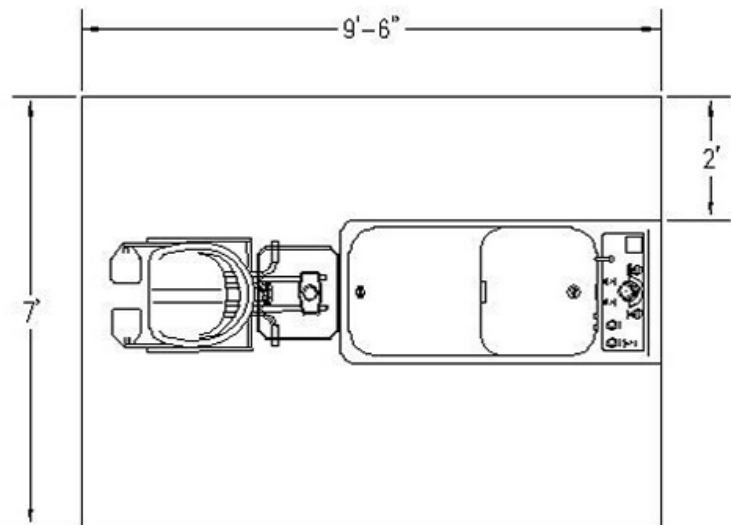
### THE SUPERIOR™ SERIES

- Specification

- Tub Length 63 1/2"
- Tub Height 35 1/2"
- Tub Deck Height 41 1/2"
- Tub Length with Penner Transfer 74"
- Tub Width 27 1/2" W/ Buttons & Shower Handle
- Tub Weight Without Crate 250 Lbs.
- Tub Shipping Weight Crated 300 Lbs.
- Tub Filled Volume 87 Gallons
- Filling Time at 35 PSI Dynamic Pressure 9 Min. 40 Sec 2 1/4" Down from Overflow
- Emptying Time 3 Min. 10 Sec. When 2 1/4" Down from Overflow
- Water Connection 3/4"
- Hoses (Included) 3/4"
- Minimum Water Pressure (USA) 20 PSI
- Maximum Water Pressure (USA) 150 PSI
- Recommended Maximum Hot Water Tub Fill Temperature 110 Degree "F"
- Maximum Cold Water Temperature 67 Degree "F"
- Drain Connection 2" Male Nominal
- Minimum Drain Capacity 35 Gallon
- Electrical Connection (USA) 120VAC 13.3 Amp. 60 HZ 1 PH



PENNER MFG - SUPERIOR TUB SIDE VIEW



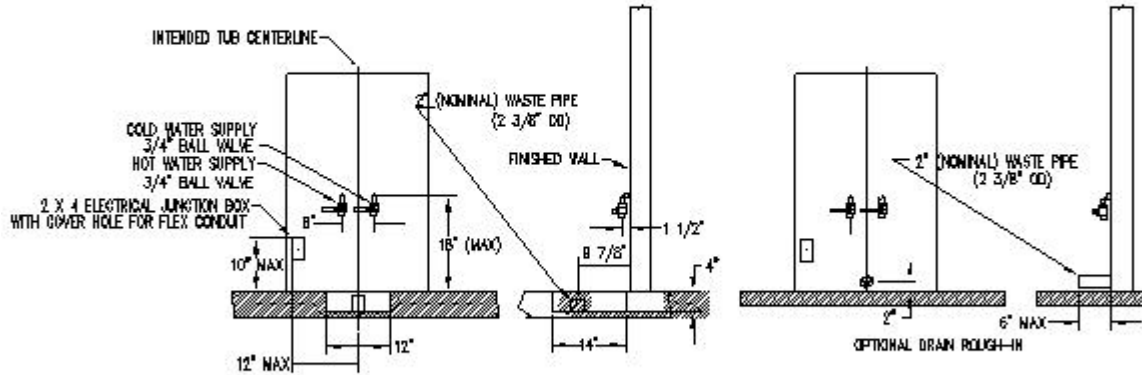
PENNER MFG INC  
SUPERIOR TUB WITH FIXED LIFT



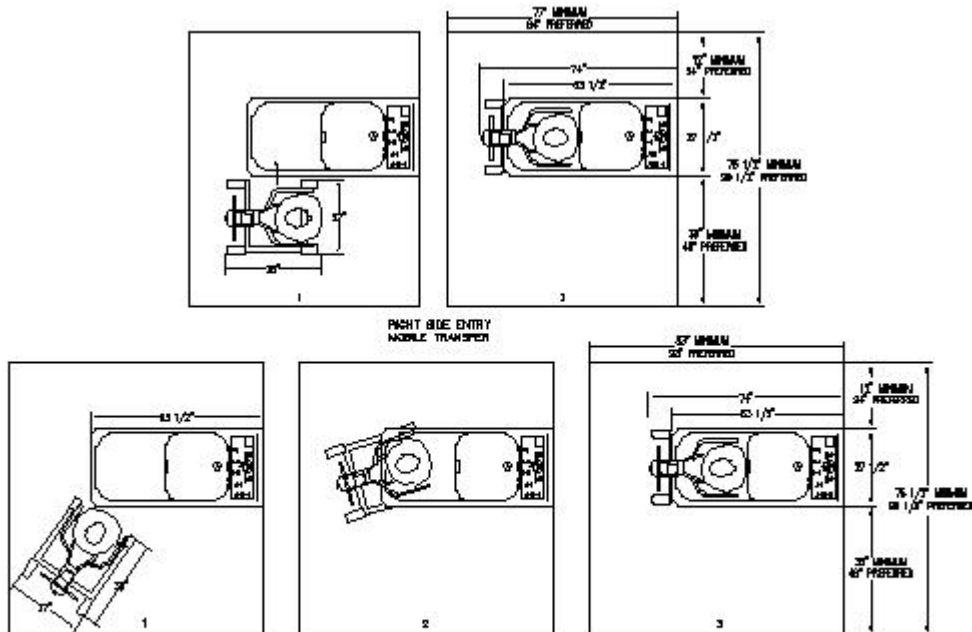
# Penner Manufacturing Inc.

## Aqua-Aire® Spas

### THE SUPERIOR™ SERIES



PENNER MFG - SUPERIOR ROUGH-IN



END ENTRY MOBILE TRANSFER

PENNER MFG - SUPERIOR TUB WITH MOBILE TRANSFER ROOM SIZE REQUIREMENTS